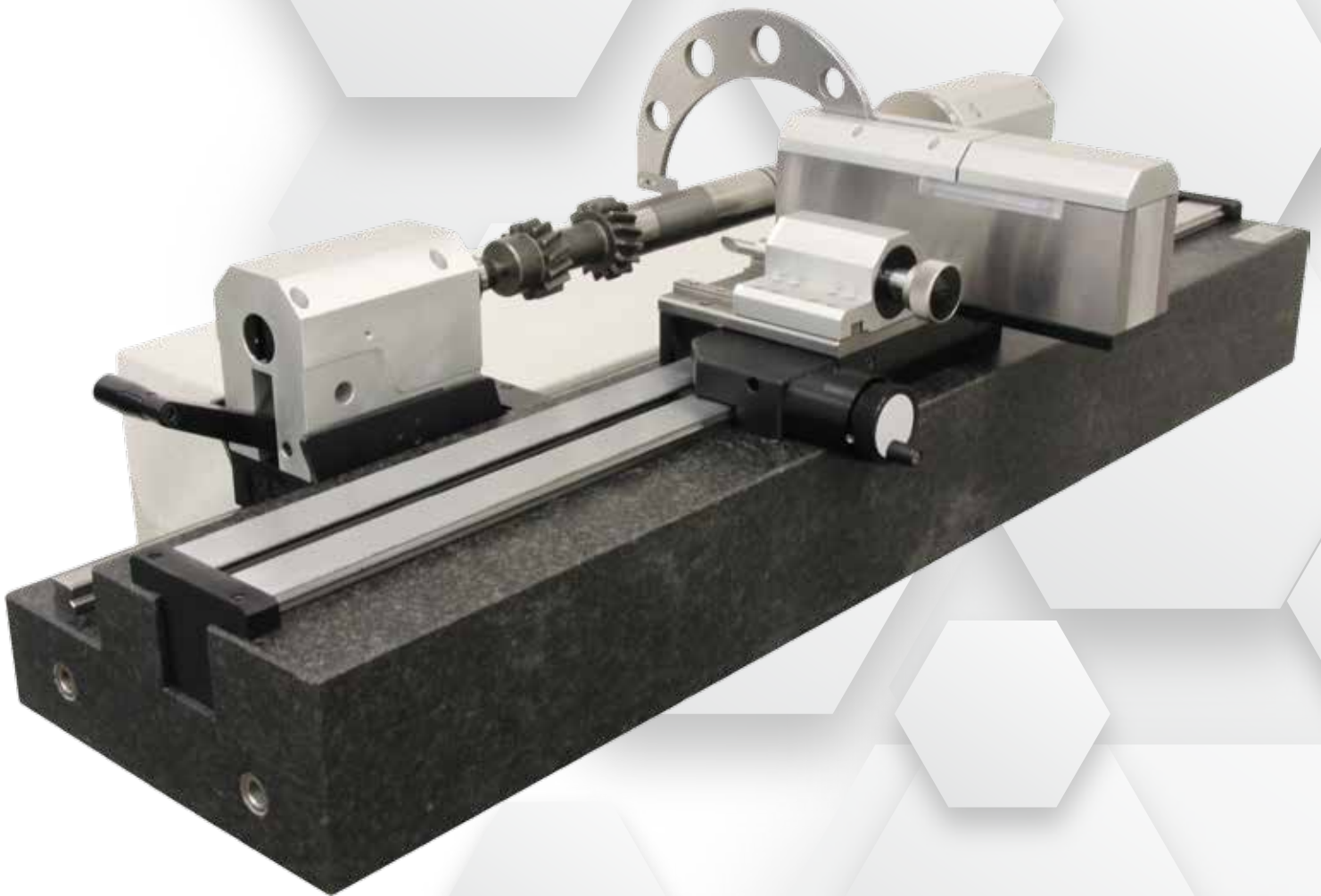


GIOTTO MAN

MANUAL MEASURING
MACHINE FOR SHAFTS



M E T R O L O G Y



GV METROLOGY

San Giovanni in Persiceto - Bologna

www.gvmetrologia.it

info@gvmetrologia.it

+39 051 687 08 14

TECNIMETAL

Delegación Norte: T:604540530 E:norte@tecnimetsa.com

Delegación Centro: T:601394965 E:info@tecnimetsa.com

TECNIMETAL

diameter and length version



GIOTTO-MAN is a manual measuring bench for shafts designed to be placed in the production floor for an immediate feedback on the tolerance limits. Diameter and Length measurement axis are activated by operator. The repeatability is ensured by a dedicated mechanical system.

GIOTTO-MAN is ideal for fast measurement in the workshop area and it is customizable according to the customer specifications.

Manual measurement

Accurate measuring results

Good repeatability through mechanical system

Constant measuring force application to avoid operator influence

DIMENSIONAL AND GEOMETRICAL PARAMETERS
 **DIAMETER**
 **SHOULDER**
 **WIDTH OF RECESS**
 **LENGTH MEASUREMENT**
 **TAPER**
TECHNICAL SPECIFICATIONS

| GIOTTO MAN | | GM500 | GM1000 |
|-----------------------------------|----|---------------|---------------|
| Measuring range, length Z | mm | 0-500 | 0-1000 |
| Measuring range, diameter X | mm | 1-120 | 1-150 |
| Max permissible error, length Z | µm | 4 + L(mm)/100 | 4 + L(mm)/100 |
| Max permissible error, diameter X | µm | 3 + D(mm)/100 | 3 + D(mm)/100 |
| Repeatability, length Z (2s) | µm | ≤ 4 | ≤ 4 |
| Repeatability, diameter X | µm | ≤ 3 | ≤ 3 |
| Resolution, length Z | mm | 0.001 | 0.001 |
| Resolution, diameter X | mm | 0.001 | 0.001 |
| Measuring force Z; X | N | constant | constant |
| Max weight of shaft | Kg | 40 | 60 |
| Weight of instrument | Kg | 200 | 390 |